

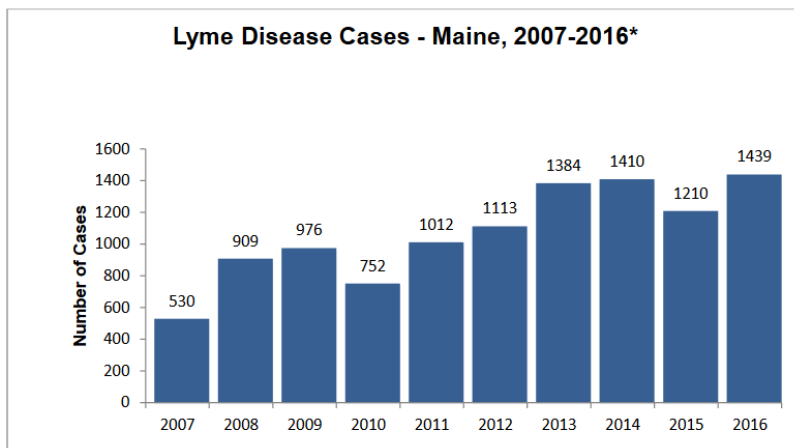
Vector-borne disease and climate change

Vectors in Maine

- Vectors are insects and other organisms that transmit disease to humans
- In Maine these vectors are most commonly mosquitos and ticks
- Shortened winters and more extreme rain events--characteristic of our changing climate --are associated with greater tick and mosquito activity and abundance



Lyme disease



Lyme disease is a bacterial infection transmitted by one of the 14 tick species in Maine, the deer tick .

It is the most commonly reported vector borne-disease in the United States and the second most commonly reported infectious disease in Maine.

Temperatures, deer tick populations, and Lyme disease are on the rise in Maine.

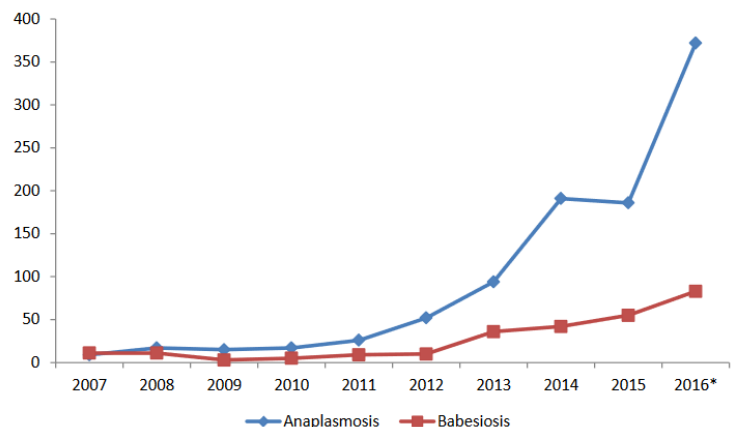
* 2016 data are preliminary as of 01/18/2017

Maine CDC data, *Report to Maine Legislature Lyme and other Tickborne Illnesses*, February 1, 2017

Other tick-borne disease in Maine

- Babesiosis – a malaria-like parasitic disease
- Anaplasmosis – a bacterial illness
- Powassan – a tick-borne viral infection
- ◆ 2013 fatal case of tick-borne Powassan virus type 2 (deer tick virus)
- ◆ 2017 record case numbers of anaplasmosis, babesiosis, and Lyme

Anaplasmosis and Babesiosis, Maine 2007-2016*

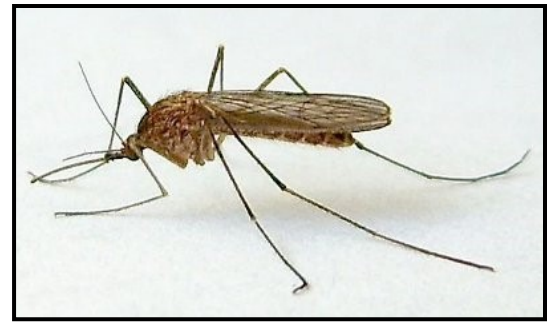


* 2016 data are preliminary as of 01/18/2016

Maine CDC data, *Report to Maine Legislature Lyme and other Tickborne Illnesses*, February 1, 2017

Mosquito-borne illnesses

- 2012 first human case of West Nile virus in Maine; 2nd in 2015
- 2014 first human case of eastern equine encephalitis virus in Maine, 2nd in 2015 (fatal)
- 2017 first two cases of Jamestown Canyon virus
- Cases of malaria, Dengue, and Zika virus were contracted outside of Maine



- Tick habitat is primarily wooded, damp areas with high grass and leaf debris (ticks are out nearly year-round in Maine)

What you can do

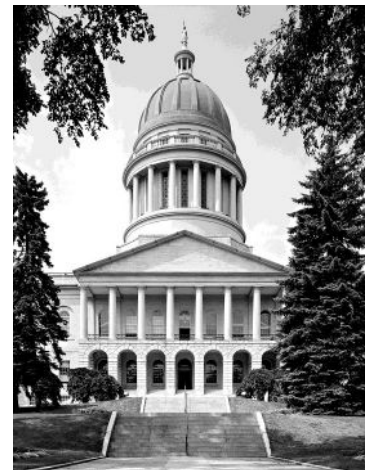
See your physician if you think you have been exposed

Prevent exposure

- Keep your property free of standing water (remove old tires or any other debris that might hold stagnant water)
- Wear long sleeves and pants
- Use repellent (if using a product containing DEET, use only on clothing, (never use a repellent containing DEET on children)
- Mosquitos are most prevalent at dawn and dusk

What we can do together

- Support and use clean energy like solar
- Make your home and auto more energy efficient
- Try to eat more locally, organically, and plant-based foods (waste less)
- Support candidates who are serious about reducing emissions of carbon dioxide and other greenhouse gases
- Work with and/or support local groups and organizations to promote awareness of and advocate for global climate change policy
- Support efforts that require all power plants to meet federal air pollution standards



Check out the full Death by Degrees report on our website for more information.



207.410.0084

karen@psrmaine.org

facebook.org/PSRMaine